

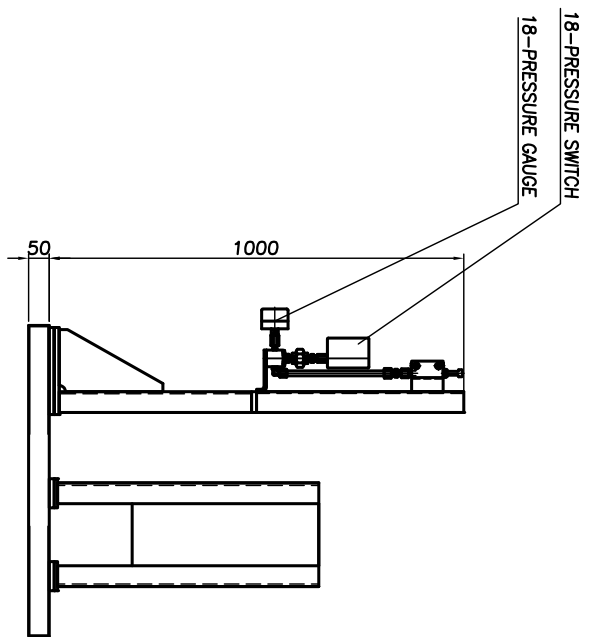
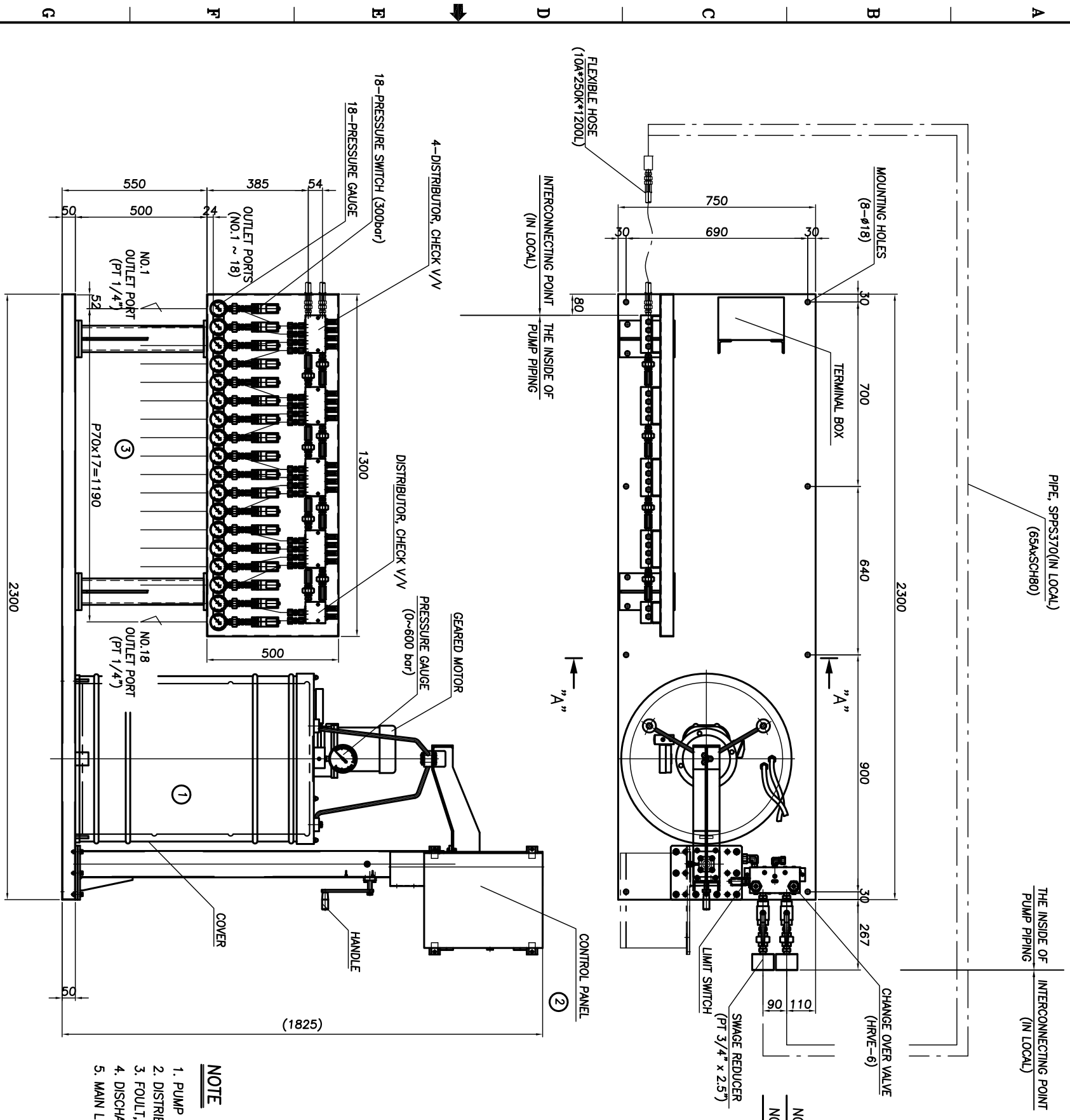
10-S-04-R6-R3-DL-DPLR-V3

ON DWG

번 호 NO.	품 명 DESCRIPTION	규 격 SIZE	재 질 MATT	수 량 QTY	중 량 L.Wt	비 고 REMARKS
1	GREASE PUMP DPLR	380V x 350K	-	1	140	
2	CONTROL PANEL DPLR	380V x 50HZ	-	1	60	
3	DISTRIBUTOR V/V STAND ASS'Y	DV40 x 18P	-	1	150	

**PUMP SPECIFICATION**

TYPE	DISCHARGE VOLUME	MAX. TEST DISCHARGE PRESSURE	RELIEF SETTING PRESSURE	TANK CAPACITY	OPERATING PRESSURE	MOTOR
DPLR-VAR6LSH ASS'Y	400cc/min.	350 bar	330 bar	200Liter	250 bar	0.75KWx4Px3ø 50Hz, 380V RATIO : 1/20



FOR INFORMATION

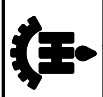
**PAINT SPECIFICATION**

1st. EPOXY PRIMER EP170 : 30MICRON  
 2nd. ENAMEL MT330 : 30MICRON  
 3rd. ENAMEL MT330 : 30MICRON  
 TOTAL : 90MICRON  
 FINAL COLOR : 2.5G 6/2

VIEW "A-A"

- NOTE**
1. PUMP STAND & PANEL, P/S, MOTOR, L/S, WIRING
  2. DISTRIBUTOR V/V UNIT ONE BED
  3. FOULT, SIGNAL SETTING 200~250bar
  4. DISCHARGE TIME 1~3min
  5. MAIN LINE# 65A&SCH80, SPPS370, IN LOCAL

번 호 NO.	날 짜 DATE	개 정 내 역 REVISION & DESCRIPTION	검 도 DRAWN	검 도 CHECKED	승 인 APPROVED



LUBTEC CO., LTD.

고객사  
CUSTOMER

PT.KP

기름 윤활 시스템  
GREASE LUB SYSTEM  
(TYPE : DPLR-VAR6LSH)

검 도 DRAWN	검 도 CHECKED	검 도 REVIEWED	승 인 APPROVED	SCALE	N/S
K.H.KIM	J.S.PARK		S.H.LIM		

SL-00001